

FINISHES

2020

FINISHES

PEDRALI

2020

FINISHES_2001

Pedrali SpA

Sp 122 Mornico Al Serio

24050 Bergamo - Italy

Export Dept. Tel: +39 035 8358840

Ufficio Commerciale Italia Tel: +39 035 8358810

info@pedrali.it

www.pedrali.it

PEDRALI[®]
THE ITALIAN ESSENCE

Finishes index

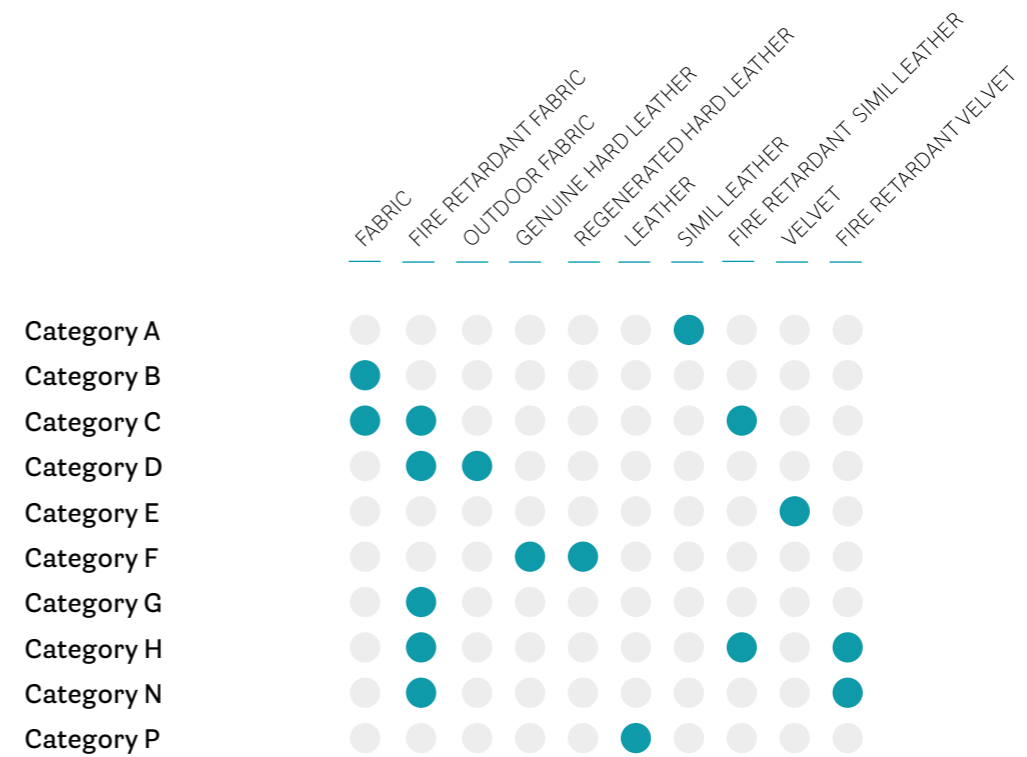
Indice delle finiture

PRODUCT NAME NOME PRODOTTO	PAGE PAGINA
Fabrics / Tessuto	009
Hard Leather / Cuoio	042
Leather / Pelle	038
Simil Leather / Finta pelle	029
Velvet / Velluto	045

Beauty,
tradition
and innovation

Material for upholstery and cushions

Rivestimenti per imbottiture e cuscini



Legend

Legenda



Fire-retardant
Ignifugo



Outdoor use
Adatto per uso esterno

washing / lavaggio

drying / asciugatura



Do not wash
Lavaggio a secco



Do not tumble dry
Non asciugare in asciugatrice



Hand wash
Lavaggio a mano



Dry flat
Asciugare disteso



Wash at max 30°C normal
Lavaggio normale, max 30°C



ironing / stiratura



Wash at max 30°C mild
Lavaggio delicato, max 30°C



Do not iron
Non stirare



Wash at max 40°C normal
Lavaggio normale, max 40°C



Iron at low temperature
Stirare a bassa temperatura



Wash at max 60°C mild
Lavaggio delicato, max 60°C



Iron at medium temperature
Stirare a media temperatura

dry cleaning / lavaggio a secco

bleaching / candeggiio



Do not dry clean
Lavaggio a secco non consentito



Do not bleach
Non candeggiare



Dry clean, tetrachloroethylene (PCE)
Lavaggio a secco con percloroetilene (PCE)



Any bleaching agent allowed
Candeggiio consentito



Gentle dry cleaning with PCE
Lavaggio a secco delicato con PCE



Compliant to Ecolabel UE
environmental requirements
Conforme ai requisiti ambientali Ecolabel UE

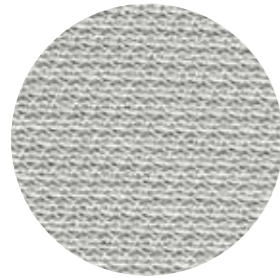


96/98/CE – 2010/68/UE
EU marine equipment rules compliant
Conforme ai requisiti europei per
equipaggiamenti marittimi

Fabrics

Tessuti

CATEGORY B / CATEGORIA B

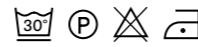


B 01



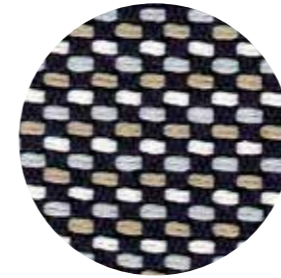
B 02

technical specifications / specifiche tecniche

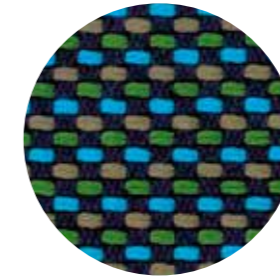


- **COMPOSITION / COMPOSIZIONE**
100% Nylon (Support film PVC)
- **ABRASION / ABRASIONE**
>50.000 cycles, Martindale (UNI EN ISO 12947:00)
- **RUBBING FASTNESS / SOLIDITÀ ALLO SFREGAMENTO**
5, scale 1-5 (UNI EN ISO 105 X12:97)
- **PILLING**
5, scale 1-5 (UNI EN ISO 12945-2:00)
- **LIGHT FASTNESS / SOLIDITÀ ALLA LUCE**
5, scale 1-8 (UNI EN ISO 105-B02:01)

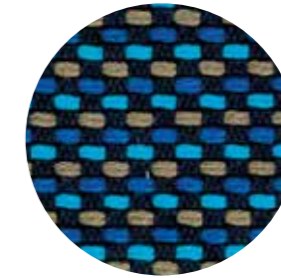
CATEGORY C / CATEGORIA C



C 37



C 38



C 39



C 36

technical specifications / specifiche tecniche

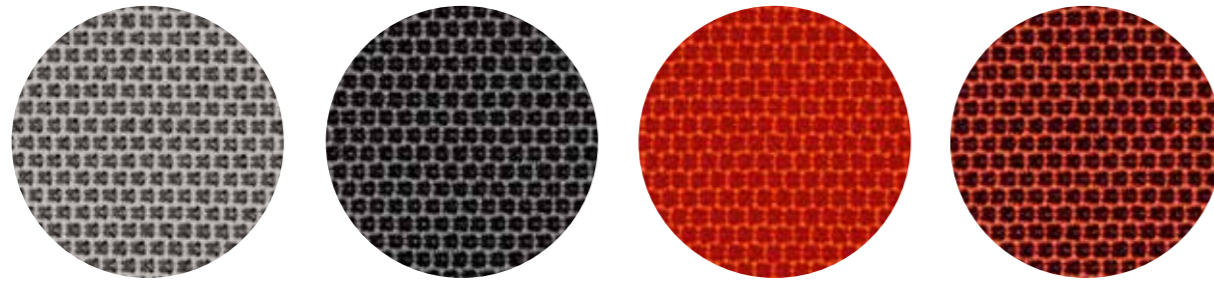


- **COMPOSITION / COMPOSIZIONE**
94% Cotton
6% Polyamide
- **ABRASION / ABRASIONE**
40.000 cycles, Martindale (BS EN ISO 12947-2 1999)
- **RUBBING FASTNESS / SOLIDITÀ ALLO SFREGAMENTO**
Dry 4-5 and Wet 2-3, scale 1-5 (BS EN ISO 105-X12:1995)
- **PILLING**
4, scale 1-5 (BS EN ISO 12945-2:2001 to 5.000 cycles)
- **LIGHT FASTNESS / SOLIDITÀ ALLA LUCE**
4-5 (light colours)
5 (medium-dark colours) (BS EN ISO 105-B02:2001)

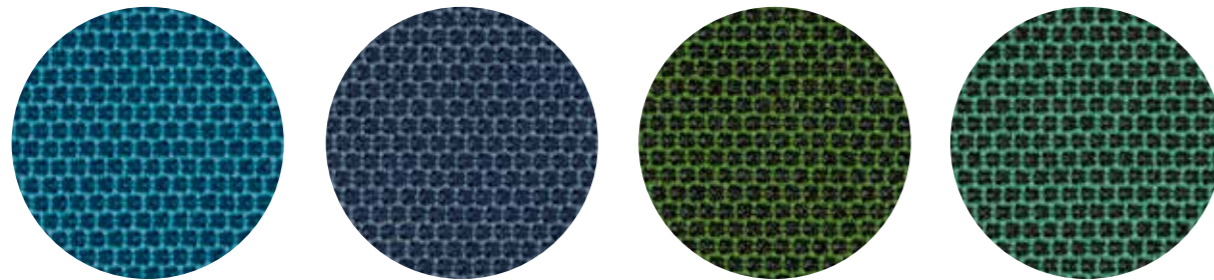
only for collection / solo per collezioni



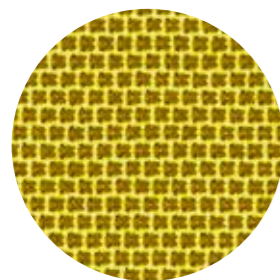
Island



C 101 C 86 C 85 C 89



C 83 C 100 C 84 C 88



C 87

technical specifications / specifiche tecniche



- COMPOSITION / COMPOSIZIONE
54% New Zealand Wool
44% Post-consumer recycled, polyester
2% Polyamide
- ABRASION / ABRASIONE
100.000 cycles, Martindale
(EN ISO 12947-2)

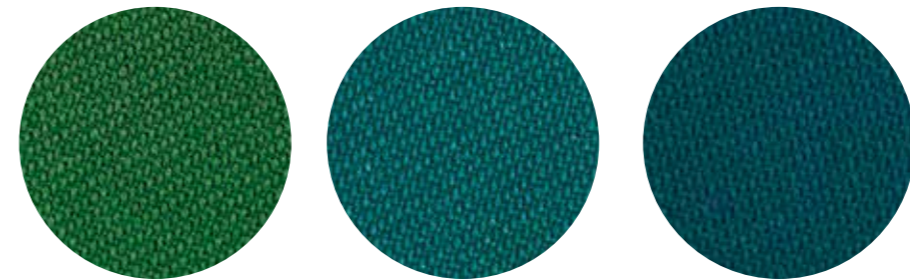
- RUBBING FASTNESS / SOLIDITÀ ALLO SFREGAMENTO
Dry and Wet 4-5, scale 1-5
(EN ISO 105-X12:1995)
- PILLING
4-5, scale 1-5 (EN ISO 12945-2)
- LIGHT FASTNESS / SOLIDITÀ ALLA LUCE
5-7, scale 1-8 (EN ISO 105-B02)

- FLAME RESISTANCE
RESISTENZA AL FUOCO
BS EN 1021 1&2
BS EN 1021-1
BS 5852 Part 1 0, 1
US CA TB 117-2013

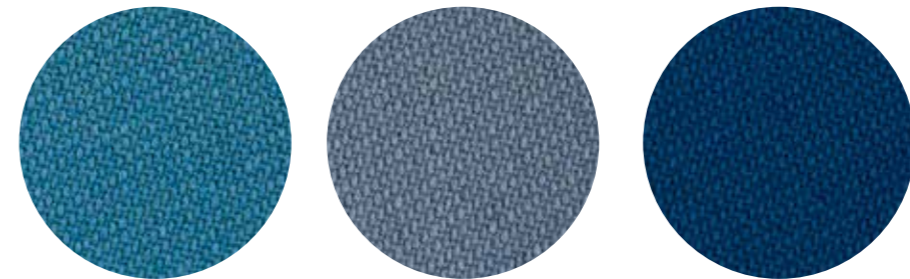
- APPROVED / OMOLOGATO



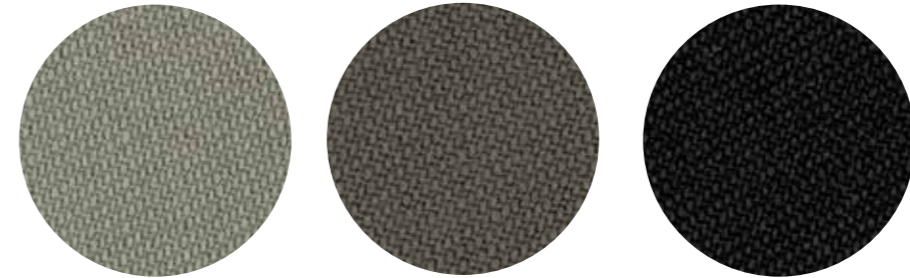
C 110 C 111 C 112 C 113



C 117 C 118 C 119



C 120 C 121 C 122



C 114 C 115 C 116

technical specifications / specifiche tecniche

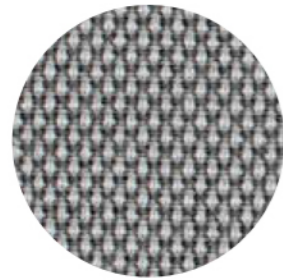
- APPROVED / OMOLOGATO



- COLLECTION / COLLEZIONE
svensson - SEMI
- ABRASION / ABRASIONE
100.000 cycles, Martindale
(EN ISO 12947-2)
- RUBBING FASTNESS
SOLIDITÀ ALLO SFREGAMENTO
Dry 4 and Wet 3-4, scale 1-5
(EN ISO 105-X12)
- LIGHT FASTNESS
SOLIDITÀ ALLA LUCE
5-7, scale 1-8
(EN ISO 105-B02)
- FLAME RESISTANCE / RESISTENZA AL FUOCO
BS 5852 Crib 5
EN ISO 1021 Part 1&2
IMO FTP Code 2010: Part 8
UNI 9175 e UNI 9175/FA1 Classe 1 IM



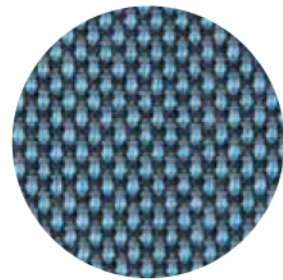
CATEGORY D / CATEGORIA D



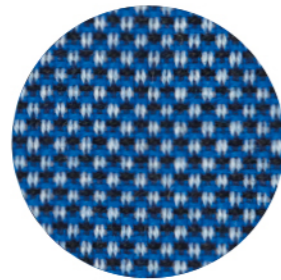
D 40



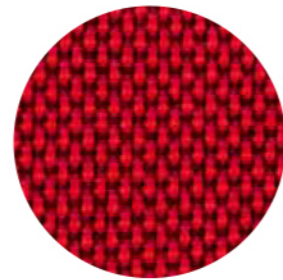
D 41



D 43



D 44



D 42

technical specifications / specifiche tecniche

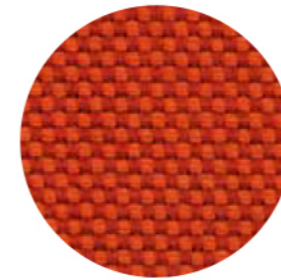


- **COMPOSITION / COMPOSIZIONE**
88% New Zealand Wool
12% Polyamide
- **ABRASION / ABRASIONE**
100.000 cycles, Martindale
(EN ISO 12947-2)
- **RUBBING FASTNESS / SOLIDITÀ ALLO SFREGAMENTO**
Dry and Wet 4-5, scale 1-5
(EN ISO 105-X12)
- **PILLING**
4-5, scale 1-5 (EN ISO 12945-2)
- **LIGHT FASTNESS / SOLIDITÀ ALLA LUCE**
5-7, scale 1-8 (EN ISO 105-B02)
- **FLAME RESISTANCE / RESISTENZA AL FUOCO**
BS EN 1021 1&2
BS 5852 Part 1 0, 1
UNI 9175 Classe 1 IM
US CA TB 117-2013

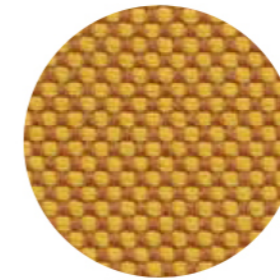
- APPROVED / OMOLOGATO



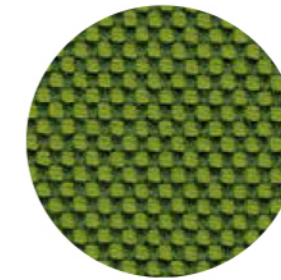
CATEGORY G / CATEGORIA G



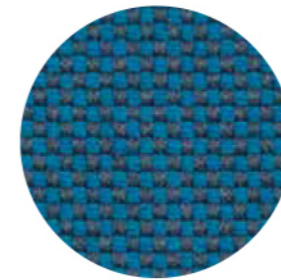
G 170



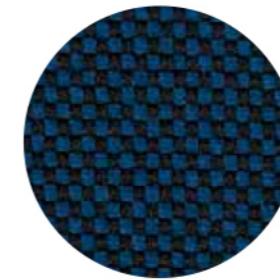
G 171



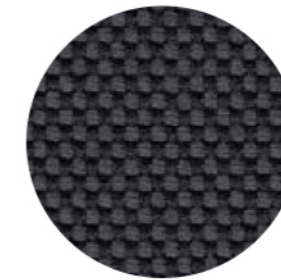
G 172



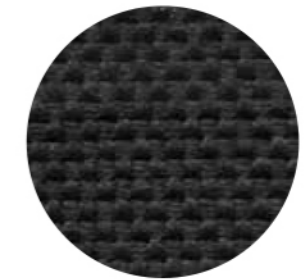
G 173



G 174



G 175



G 176

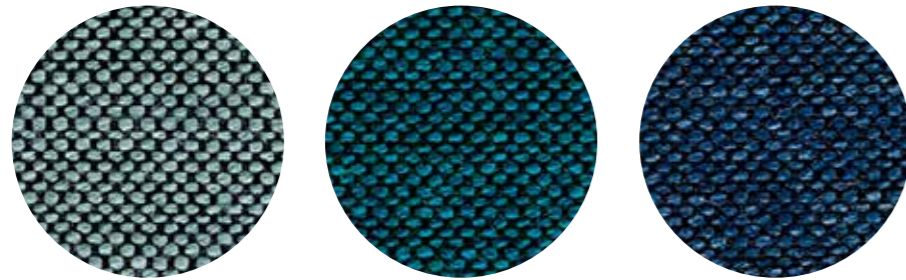
technical specifications / specifiche tecniche



- **COMPOSITION / COMPOSIZIONE**
96% Virgin Wool
4% Polyamide
- **ABRASION / ABRASIONE**
90.000 cycles, Martindale
(DIN EN ISO 12947-2)
- **PILLING**
4-5, scale 1-5 (EN ISO 12945-2)
- **LIGHT FASTNESS / SOLIDITÀ ALLA LUCE**
5-8, scale 1-8 (EN ISO 105-B02)
- **SOUND ABSORPTION / ASSORBIMENTO ACUSTICO**
folded: $\alpha_w = 0.95$ Class A (ISO 11654)
- **FLAME RESISTANCE / RESISTENZA AL FUOCO**
BS 5852:1979 (Part 1)
BS 5852:2006 (Part 2) Crib 5
DIN 4102-1 B2
- **EN 13501-1**
EN 1021 -1 and -2
FAR 25.853 (12 sec. vertical)
IMO: 2014/90/EU (MED)
US CA TB 117-2013

- APPROVED / OMOLOGATO

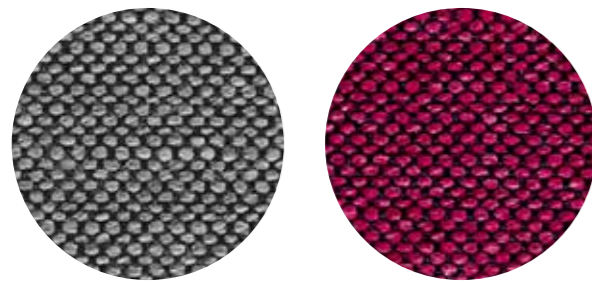




G 154

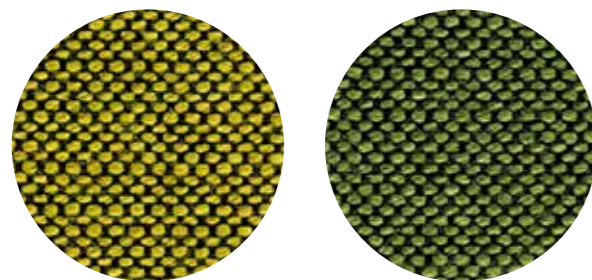
G 155

G 156



G 151

G 150



G 152

G 153

technical specifications / specifiche tecniche

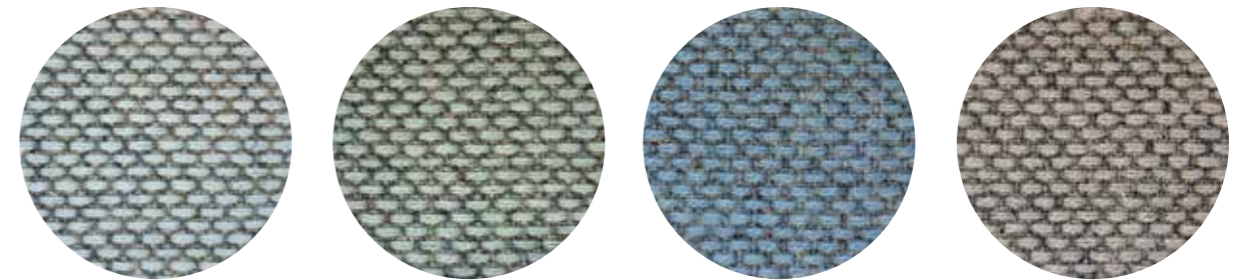


- COLLECTION / COLLEZIONE
svensson - BALANCE
- COMPOSITION / COMPOSIZIONE
82% Wool
12% Rami
6% Polyamide

- ABRASION / ABRASIONE
100.000 cycles, Martindale (EN ISO 12947-2)
- RUBBING FASTNESS / SOLIDITÀ ALLO SFREGAMENTO
Dry 4 and Wet 3-4, scale 1-5
(EN ISO 105-X12)
- LIGHT FASTNESS / SOLIDITÀ ALLA LUCE
5-7, scale 1-8 (EN ISO 105-B02)

- FLAME RESISTANCE / RESISTENZA AL FUOCO
BS 5852 Crib 5
EN ISO 1021 Part 1&2
IMO FTP Code 2010: Part 8
UNI 9175 Classe 1 IM
US CA TB 117-2013

- APPROVED / OMOLOGATO

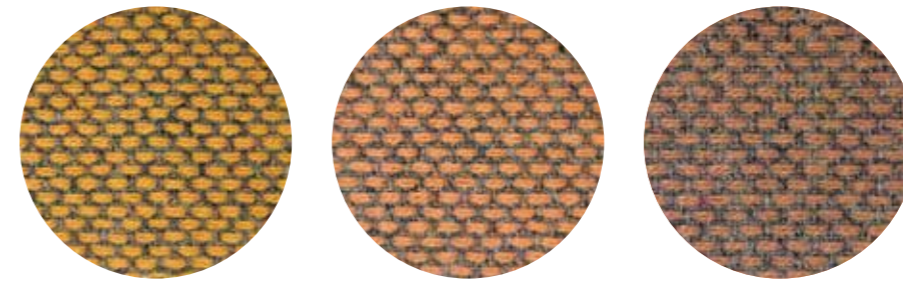


G 143

G 145

G 144

G 146



G 140

G 141

G 142

technical specifications / specifiche tecniche



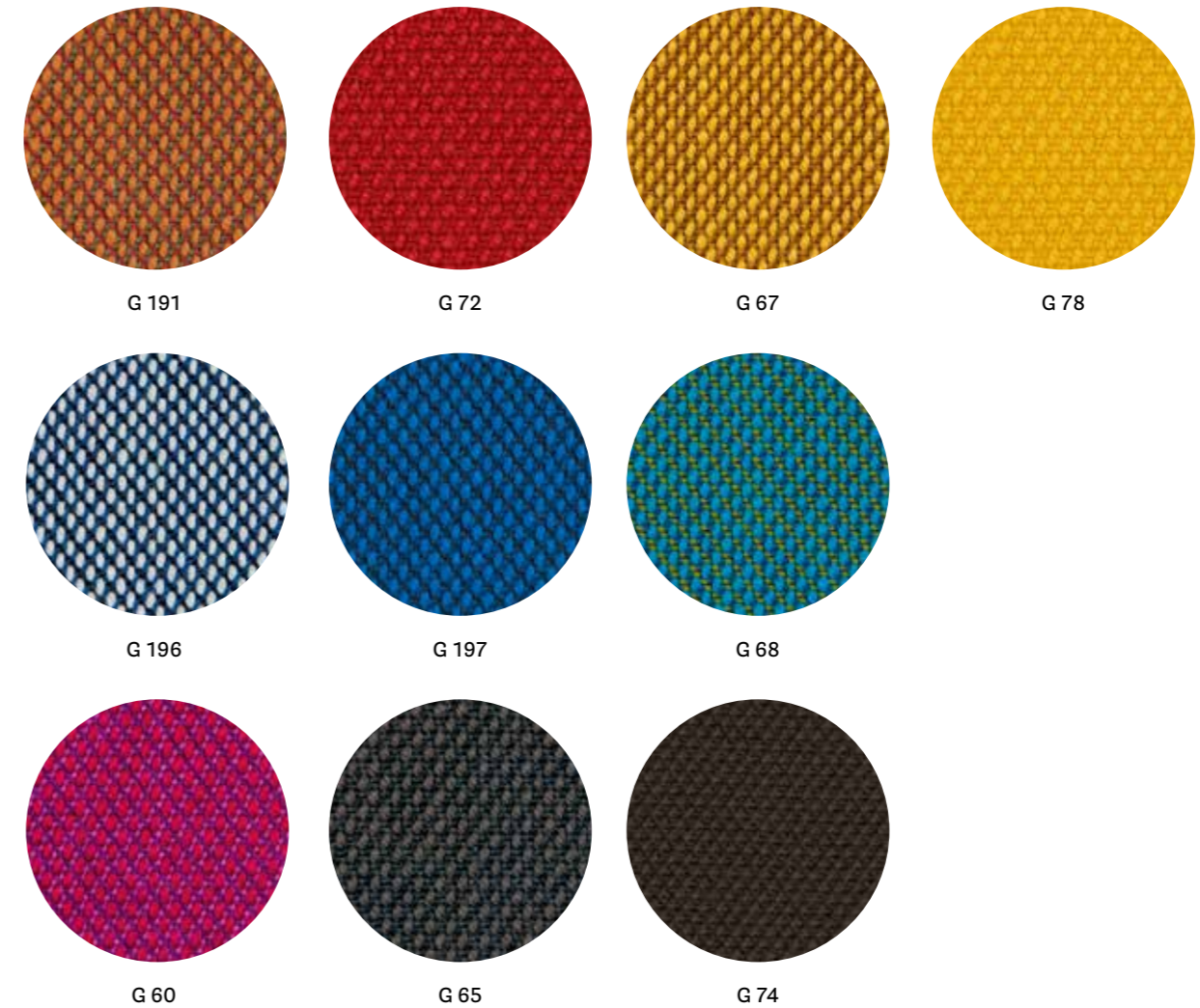
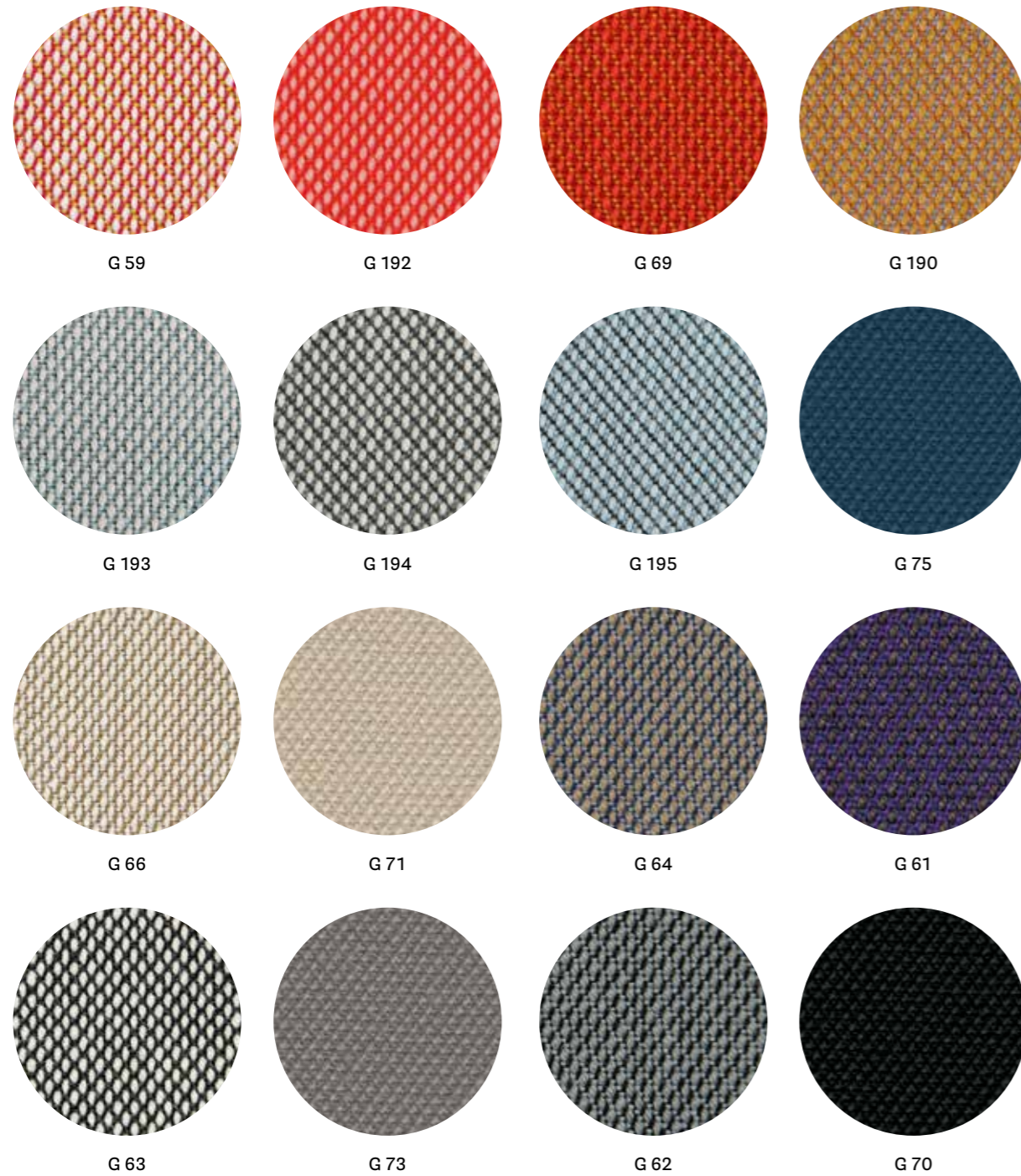
- COLLECTION / COLLEZIONE
kvadrat - RE-WOOL
DESIGNER Margrethe Odgaard
- COMPOSITION / COMPOSIZIONE
45% Recycled wool
45% New wool
10% Nylon
- ABRASION / ABRASIONE
50.000 cycles, Martindale
(DS/EN ISO 12947-2:2016)

- RUBBING FASTNESS / SOLIDITÀ ALLO SFREGAMENTO
Dry and Wet 4-5, scale 1-5
(ISO 105-X12)
- PILLING
4, scale 1-5 (EN ISO 12945)
- LIGHT FASTNESS / SOLIDITÀ ALLA LUCE
5-7, scale 1-8 (ISO 105-B02:2014)
- SOUND ABSORPTION / ASSORBIMENTO ACUSTICO
folded: $\alpha_w = 0.75$ Class C (ISO 11654)

- FLAME RESISTANCE / RESISTENZA AL FUOCO
AS/NZS 1530.3
BS 5852 Part 1
BS 5852 Crib 5 with treatment
BS 5852 IGNITION SOURCE 3
EN 1021 - 1/2
IMO FTP Code 2010: Part 8
NF D60-013
ÖNORM B1/Q1
UNI 9175 Classe 1IM
US CA TB 117-2013

- APPROVED / OMOLOGATO





technical specifications / specifiche tecniche



• COLLECTION / COLLEZIONE

kvadrat

STEELCUT TRIO 3

except

G61, G60, G68: STEELCUT TRIO 2

G70+G78: STEELCUT 2

DESIGNERS Dijkmeijer & Ridolfo

• COMPOSITION / COMPOSIZIONE

90% New wool

10% Nylon

• ABRASION / ABRASIONE

100.000 cycles,

for G70+G78: 80.000 cycles

Martindale (DS/EN ISO 12947-2:2016)

• PILLING

4, scale 1-5

for G70+G78: 3-4, scale 1-5

(EN ISO 12945)

• LIGHT FASTNESS / SOLIDITÀ ALLA LUCE

5-7, scale 1-8 (EN ISO 105-B02)

• SOUND ABSORPTION / ASSORBIMENTO ACUSTICO

folded: $\alpha_w=0.95$ Class A

for G70+G78: folded: $\alpha_w=0.80$ Class B

(ISO 11654)

• FLAME RESISTANCE / RESISTENZA AL FUOCO

AS/NZS 1530.3

AS/NZS 3837 Class 2

BS 5852 Part 1

BS 5852 Crib 5 with treatment

DIN 4102 B2

EN 1021 - 1/2

IMO FTP Code 2010: Part 8

NF D60-013

NFPA 260

ÖNORM B1/Q1

SN 198 898 5.3 with treatment

UNI 9175 Classe 1 IM

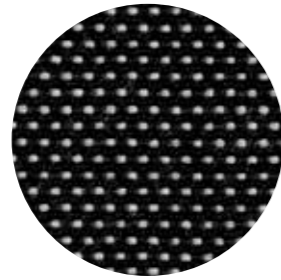
US CA TB 117-2013

• APPROVED / OMOLOGATO

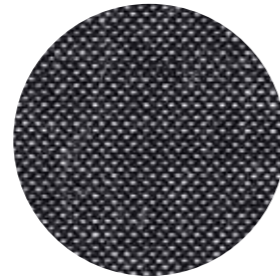




G 101



G 100



G 102

technical specifications / specifiche tecniche



- COLLECTION / COLLEZIONE
kvadrat - BASEL
DESIGNERS Herzog & de Meuron
- COMPOSITION / COMPOSIZIONE
90% New wool
10% Nylon
- ABRASION / ABRASIONE
50.000 cycles,
Martindale (EN ISO 12947-2:1998)

- PILLING
4, scale 1-5 (EN ISO 12945)
- LIGHT FASTNESS / SOLIDITÀ ALLA LUCE
6-7, scale 1-8 (ISO 105-B02)
- FLAME RESISTANCE / RESISTENZA AL FUOCO
AS/NZS 3837 Class 2
BS 5852 Part 1
BS 5852 Crib 5 with treatment

DIN 4102 B2
EN 1021 - 1/2
IMO FTP Code 2010: Part 8
NFPA 260
NF D60-013
ÖNORM B1/Q1
SN 198 898 5.3 with treatment
UNI 9175 Classe 1 IM
US CA TB 117-2013

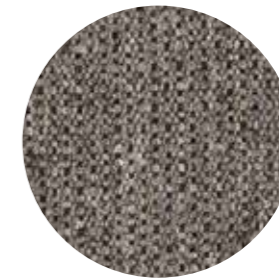
- APPROVED / OMOLOGATO



G 120



G 121



G 122

technical specifications / specifiche tecniche



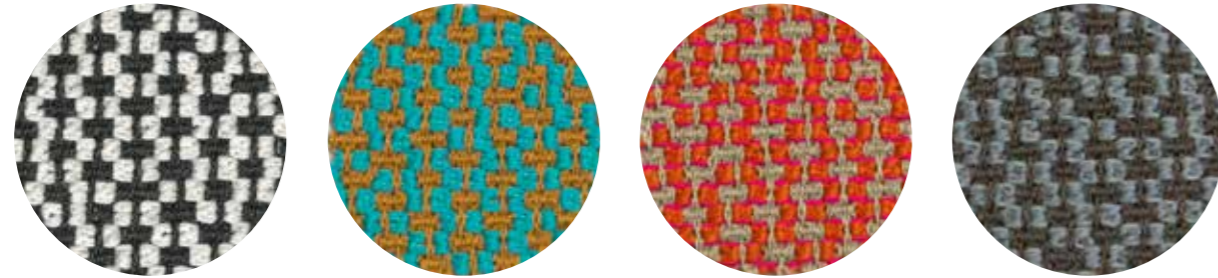
- COLLECTION / COLLEZIONE
kvadrat - MOLLY 2
DESIGNER Åsa Pärson
- COMPOSITION / COMPOSIZIONE
100% New wool
- ABRASION / ABRASIONE
75-100.000 cycles,
Martindale (EN ISO 12947-2:1998)

- PILLING
3-4, scale 1-5 (EN ISO 12945)
- LIGHT FASTNESS / SOLIDITÀ ALLA LUCE
6-7, scale 1-8 (ISO 105-B02)
- FLAME RESISTANCE / RESISTENZA AL FUOCO
BS 5852 Part 1
BS 5852 Crib 5 with treatment
DIN 4102 B2

EN 1021 - 1/2
IMO FTP Code 2010: Part 8
NFPA 260
NF D60-013
ÖNORM B1/Q1
UNI 9175/UNI 9176 Classe 1 IM
US CA TB 117-2013

- APPROVED / OMOLOGATO





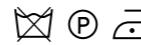
G 130

G 131

G 132

G 133

technical specifications / specifiche tecniche

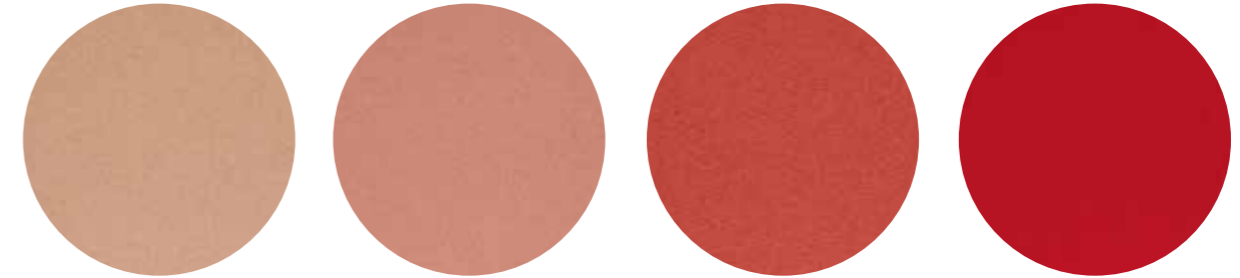


- COMPOSITION / COMPOSIZIONE
95% Virgin Wool
5% Polyamide
- ABRASION / ABRASIONE
52.000 cycles, Martindale
(DIN EN ISO 12947-2)
- PILLING
4-5, scale 1-5 (EN ISO 12945-2)

- LIGHT FASTNESS / SOLIDITÀ ALLA LUCE
5-8, scale 1-8 (EN ISO 105-B02)
- SOUND ABSORPTION / ASSORBIMENTO ACUSTICO
folded: $\alpha_w = 0.85$ Class B (ISO 11654)
- FLAME RESISTANCE / RESISTENZA AL FUOCO
BS 5852:1979 (Part 1)
BS 5852:2006 (Part 2) Crib 5
DIN 4102-1 B2

EN 1021 -1 and -2
EN 13501-1
FAR 25.853 (12 sec. vertical)
IMO: 2014/90/EU (MED)
UNI 9175 Classe 1 IM
US CA TB 117-2013

- APPROVED / OMOLOGATO

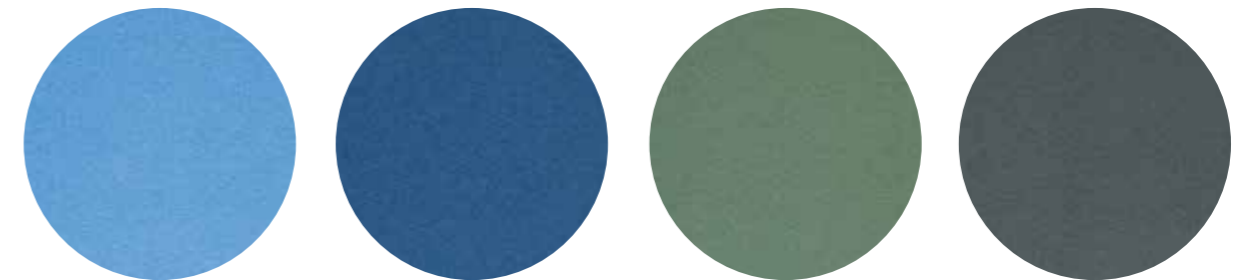


G 163

G 160

G 161

G 162

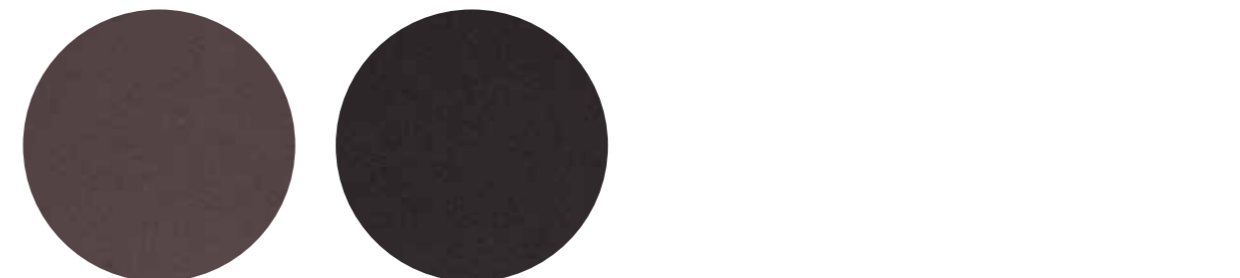


G 165

G 166

G 167

G 168



G 164

G 169

technical specifications / specifiche tecniche



- COLLECTION / COLLEZIONE
kvadrat - HERO
DESIGNER Patricia Urquiola
- COMPOSITION / COMPOSIZIONE
96% New wool
4% Nylon
- ABRASION / ABRASIONE
45.000 cycles, Martindale
(EN ISO 12947)
- PILLING
3-4, scale 1-5 (EN ISO 12945)

- LIGHT FASTNESS / SOLIDITÀ ALLA LUCE
5-6, scale 1-8 (ISO 105-B02)
- SOUND ABSORPTION / ASSORBIMENTO ACUSTICO
folded: $\alpha_w = 0.75$ Class C (ISO 11654)
- FLAME RESISTANCE / RESISTENZA AL FUOCO
AS/NZS 3837 Class 2
BS 5852 Crib 5 with treatment
BS 5852 Part 1
DIN 4102 B2
EN 1021 - 1/2
IMO FTP Code 2010: Part 8

NF D60-013
NFPA 260
SN 198 898 5.3 with treatment
UNI 9175 Classe 1 IM
US CA TB 117-2013

- APPROVED / OMOLOGATO



CATEGORY G / CATEGORIA G



G 24

G 114

G 115

G 113

G 111

G 116

G 110

G 112

G 21

G 25

G 22

G 23

technical specifications / specifiche tecniche



COLLECTION / COLLEZIONE

kvadrat

G21, G22, G25: DIVINA MELANGE 2
G24, G23: DIVINA MELANGE 3
G110+G116: DIVINA MD
DESIGNER Finn Skødt

COMPOSITION / COMPOSIZIONE

100% New Wool

ABRASION / ABRASIONE

45.000 cycles, Martindale
(EN ISO 12947)

PILLING

3, scale 1-5 (EN ISO 12945)

LIGHT FASTNESS / SOLIDITÀ ALLA LUCE

5-7, scale 1-8 (ISO 105-B02)

SOUND ABSORPTION / ASSORBIMENTO ACUSTICO

folded: $\alpha_w = 0.70$ Class C (ISO 11654)

FLAME RESISTANCE / RESISTENZA AL FUOCO

AS/NZS 1530.3
BS 5852 Crib 5
BS 5852 Part 1
BS 5867 part 2 type B (only for G23, G24)
DIN 4102 B2
EN 1021-1/2
EN 13501, C-s1, d0, glued
IMO FTP Code 2010: Part 8

NF D60013

NFPA 260

ÖNORM B1/ Q1

SN 198 898 5.3 with treatment

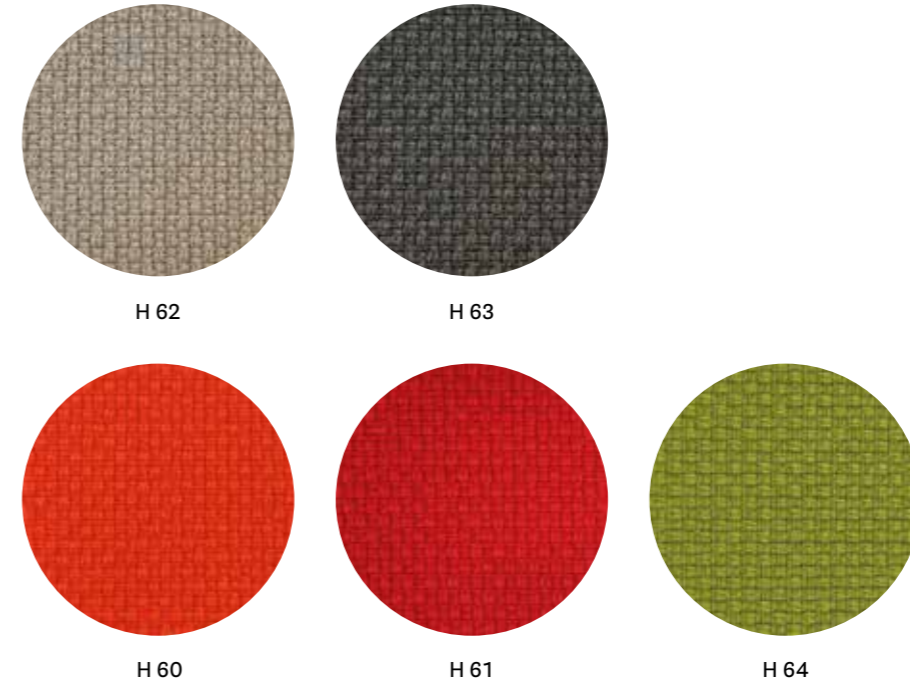
UNI 9175 Classe 1 IM

US CA TB 117-2013

APPROVED / OMOLOGATO



CATEGORY H / CATEGORIA H



H 62

H 63

H 60

H 61

H 64

technical specifications / specifiche tecniche



COMPOSITION / COMPOSIZIONE

92% New Zealand Wool
8% Polyamide

ABRASION / ABRASIONE

200.000 cycles, Martindale
(EN ISO 12947-2)

RUBBING FASTNESS / SOLIDITÀ ALLO SFREGAMENTO

Dry and Wet 4-5, scale 1-5
(EN ISO 105-X12)

PILLING

4, scale 1-5 (EN ISO 12945-2)

LIGHT FASTNESS / SOLIDITÀ ALLA LUCE

5-7, scale 1-8 (EN ISO 105-B02)

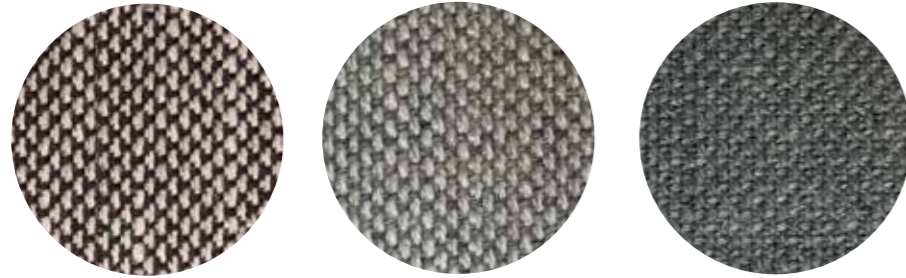
FLAME RESISTANCE / RESISTENZA AL FUOCO

BS EN 1021 1&2
BS EN 1021-1
BS 5852 Part 1 0, 1
UNI 9175 Classe 1 IM
US CA TB 117-2013

APPROVED / OMOLOGATO



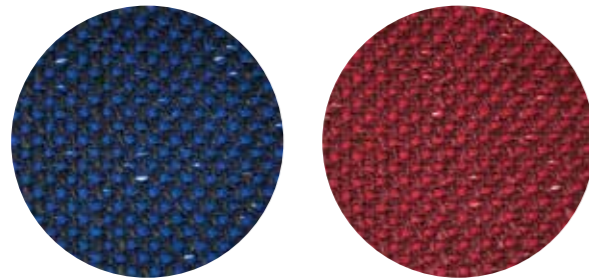
CATEGORY N / CATEGORIA N



N 05

N 01

N 02



N 03

N 04

technical specifications / specifiche tecniche



- COLLECTION / COLLEZIONE
kvadrat - SUNNIVA 2
DESIGNERS Raf Simons & Fanny Aronsen
- COMPOSITION / COMPOSIZIONE
58% New wool
25% Viscose
8% Linen
5% Polyamide
4% Polyester

- ABRASION / ABRASIONE
50.000 cycles, Martindale
(EN ISO 12947)
- PILLING
3, scale 1-5 (EN ISO 12945)
- LIGHT FASTNESS / SOLIDITÀ ALLA LUCE
5-7, scale 1-8 (ISO 105-B02)

- FLAME RESISTANCE / RESISTENZA AL FUOCO
AS/NZS 3837, class 2
BS 5852 Part 1
BS 5852 Crib 5 with treatment
DIN 4102 B2
EN 1021 - 1/2
NFPA 260
US CA TB 117-2013

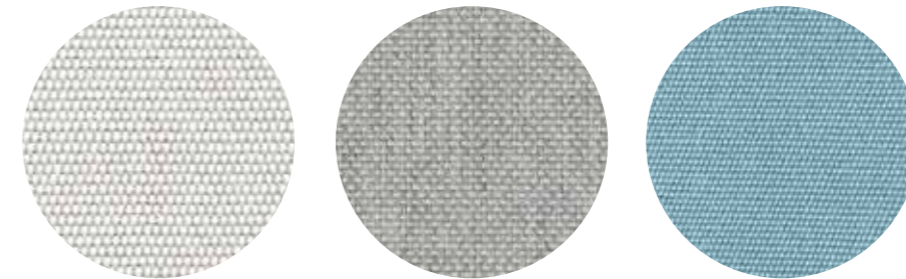
- APPROVED / OMOLOGATO



Outdoor



CATEGORY D / CATEGORIA D



D 37

D 38

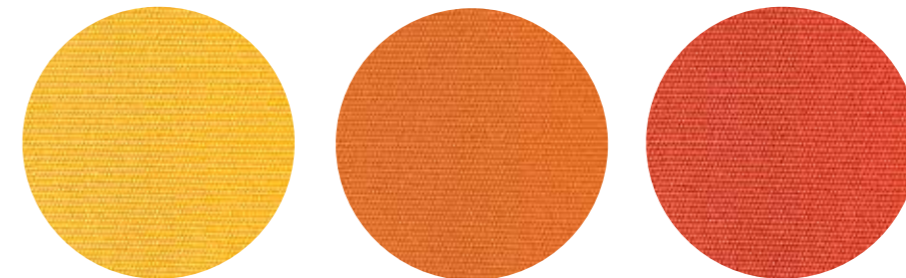
D 33



D 34

D 39

D 35



D 32

D 31

D 36

technical specifications / specifiche tecniche

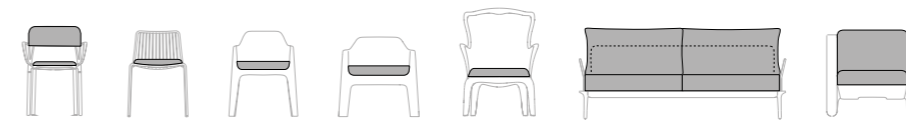


- COMPOSITION / COMPOSIZIONE
100% Acrylic teflon

- ABRASION / ABRASIONE
10.000 cycles, Martindale (EN ISO 12947)

- LIGHT FASTNESS / SOLIDITÀ ALLA LUCE
7-8, scale 1-8 (EN ISO 105-B02)

for cushions only for collections / solo per cuscino delle collezioni



Intrigo

Nolita

Plus

Plus Air

Pasha

Reva

Sunset

Only for Nolita cushions: rim available in colours D34, D35 and D36 / Solo per cuscino Nolita: disponibile con bordino in diversi colori D34 D35 e D36

Simil Leather

Finta Pelle

CATEGORY A / CATEGORIA A

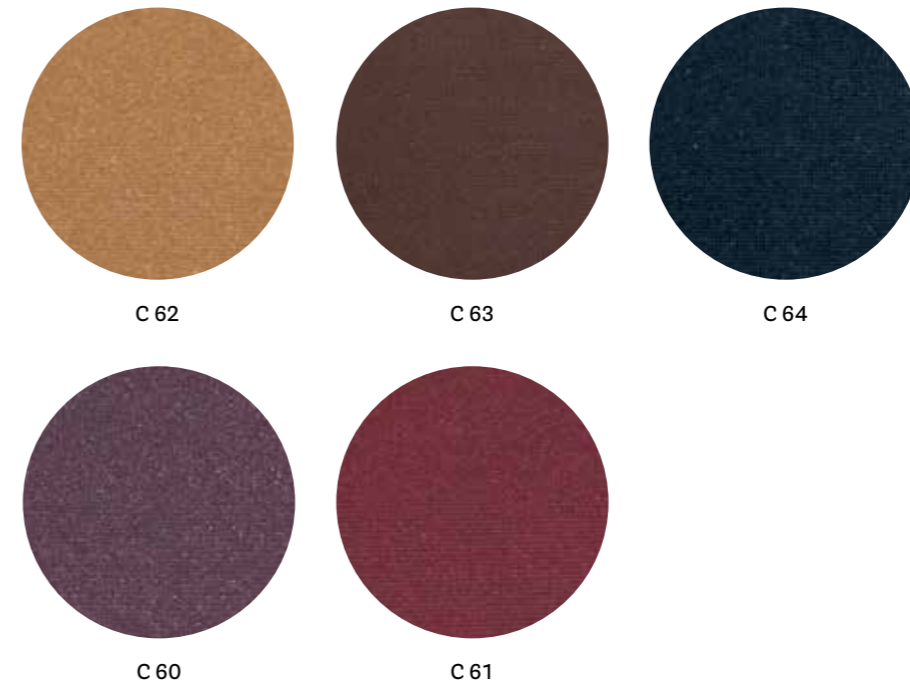


technical specifications / specifiche tecniche



- COMPOSITION / COMPOSIZIONE
85% PVC
15% Polyurethane
- ABRASION / ABRASIONE
50.000 cycles, Martindale
(UNI EN ISO 12947-2)
- RUBBING FASTNESS
SOLIDITÀ ALLO SFREGAMENTO
Dry and Wet 4-5, scale 1-5
(UNI EN ISO 105-X12)
- LIGHT FASTNESS
SOLIDITÀ ALLA LUCE
6, scale 1-8
(UNI EN ISO 105-B02)

CATEGORY C / CATEGORIA C



technical specifications / specifiche tecniche



- COMPOSITION / COMPOSIZIONE
72% PVC
25% Cotton
3% Polyurethane
- ABRASION / ABRASIONE
50.000 cycles, Martindale
(EN ISO 5470-2)
- RUBBING FASTNESS / SOLIDITÀ ALLO SFREGAMENTO
Dry and Wet 4-5, scale 1-5
(UNI EN ISO 105-X12)
- LIGHT FASTNESS / SOLIDITÀ ALLA LUCE
6, scale 1-8 (UNI EN ISO 105-B02)
- FLAME RESISTANCE / RESISTENZA AL FUOCO
BS 5852-1 Part 1
EN 1021-2
IMO RESOLUTION A.652 (16): 1989
UNI 9175 Classe 1 IM
US CA TB 117-2013

CATEGORY C / CATEGORIA C

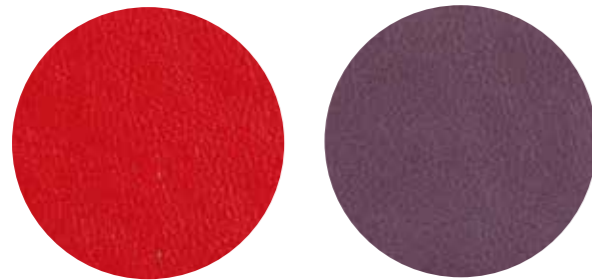


C 90

C 94

C 95

C 93



C 92

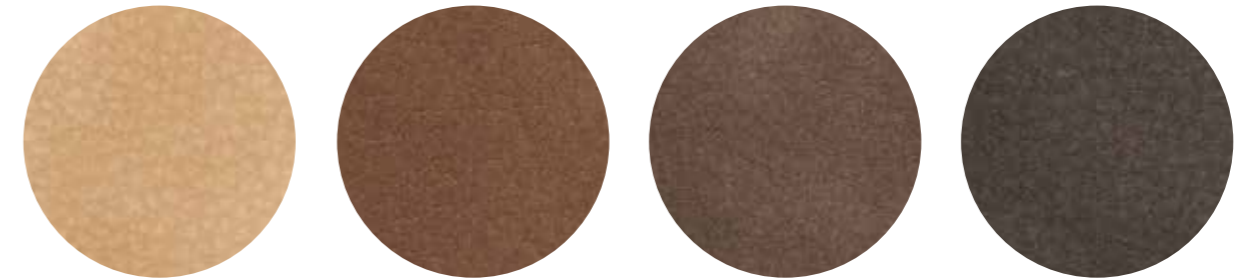
C 91

technical specifications / specifiche tecniche



- **COMPOSITION / COMPOSIZIONE**
72% PVC
25% Cotton
3% Polyurethane
- **ABRASION / ABRASIONE**
50.000 cycles, Martindale (EN ISO 5470-2)
- **RUBBING FASTNESS / SOLIDITÀ ALLO SFREGAMENTO**
Dry and Wet 4-5, scale 1-5 (UNI EN ISO 105-X12)
- **LIGHT FASTNESS / SOLIDITÀ ALLA LUCE**
6, scale 1-8 (UNI EN ISO 105-B02)
- **FLAME RESISTANCE / RESISTENZA AL FUOCO**
BS 5852-1 Part 1
EN 1021-2
IMO RESOLUTION A.652 (16): 1989
UNI 9175 Classe 1 IM
US CA TB 117-2013

CATEGORY C / CATEGORIA C



C 45

C 46

C 47

C 48

technical specifications / specifiche tecniche



- **COMPOSITION / COMPOSIZIONE**
80% PVC
18% PES
2% Polyurethane
- **ABRASION / ABRASIONE**
50.000 cycles, Martindale (EN ISO 5470-2)
- **RUBBING FASTNESS / SOLIDITÀ ALLO SFREGAMENTO**
Dry and Wet 4-5, scale 1-5 (UNI EN ISO 105-X12)
- **FLAME RESISTANCE / RESISTENZA AL FUOCO**
BS 5852 Part 1 0,1
EN 1021-1&2
UNI 9175 Classe 1 IM



technical specifications / specifiche tecniche



- COMPOSITION / COMPOSIZIONE
76% PVC
22% PES
2% Polyurethane
- RUBBING FASTNESS / SOLIDITÀ ALLO SFREGAMENTO
Dry and Wet 4-5, scale 1-5
(ISO 105-X12)
- FLAME RESISTANCE / RESISTENZA AL FUOCO
BS 5852-1 match test
EN 1021 Part 1-2
UNI 9175 Classe 1 IM
US CA TB 117-2013
- ABRASION / ABRASIONE
60.000 cycles, Martindale
(ISO 5470-2)
- LIGHT FASTNESS / SOLIDITÀ ALLA LUCE
6, scale 1-8 (ISO 105-B02)



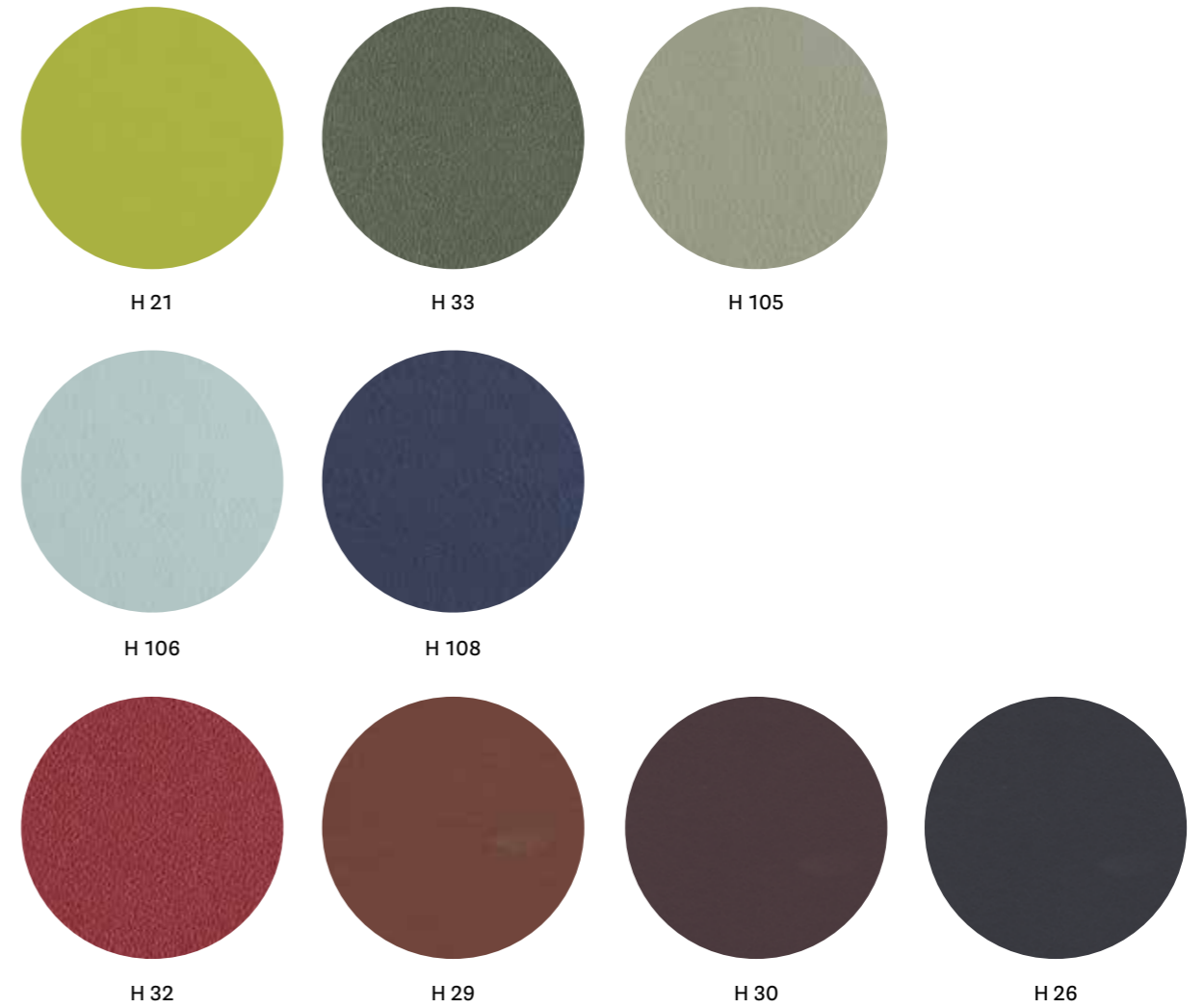
technical specifications / specifiche tecniche



- COMPOSITION / COMPOSIZIONE
85% PVC
15% Cotton
- LIGHT FASTNESS / SOLIDITÀ ALLA LUCE
≥6, scale 1-8(EN ISO 105-B02)
- FLAME RESISTANCE / RESISTENZA AL FUOCO
B2 (DIN 4102)
BS 5852 Crib 5
EN 1021.1-2
EN 13501-1 - Cs3do
FAR 25853 App F Part 1
- ABRASION / ABRASIONE
150.000 cycles, Martindale
(ISO 5470-2)
- IMO RESOLUTION A.652
NF D60-013 - AM 18
NFP 92503 M1
NY/NJ - Port Authority
UFAC Fabric Class 1
German fire standard B1 (except C12 and C22)
US CATB 117
US CATB 133

- APPROVED / OMOLOGATO





technical specifications / specifiche tecniche



- COMPOSITION / COMPOSIZIONE
63% Polyurethane
29% Cotton
8% PES
- ABRASION / ABRASIONE
150.000 cycles, Martindale
(UNI EN ISO 12947-2)

- LIGHT FASTNESS / SOLIDITÀ ALLA LUCE
5-6, scale 1-8 (UNI EN ISO 105-B02)
- FLAME RESISTANCE / RESISTENZA AL FUOCO
BS 5852 Crib 5
BS 5852 Part 1-2
EN 1021 Part 1-2
IMO resolution FTP Code 2010

IMO resolution A.652 (16):1989
UNI 9175 Classe 1 IM
US CA TB 117-2013

Leather Pelle

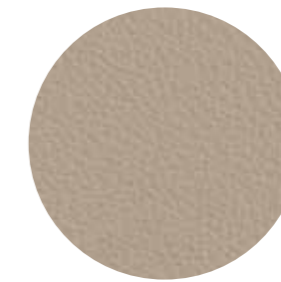
CATEGORY P / CATEGORIA P



PBI



PGC



PSA



PGA



PBE



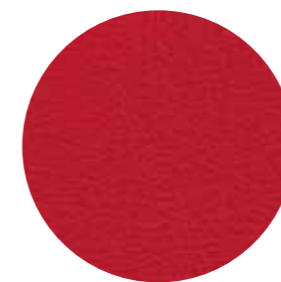
PGN



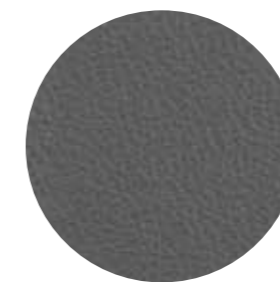
PTA



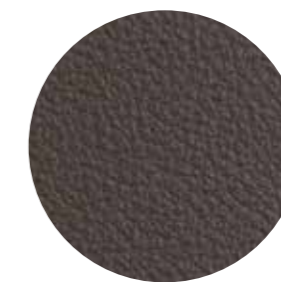
PTE



PRO



PGR



PMA



PNE

technical specifications / specifiche tecniche

• COLLECTION / COLLEZIONE



• COMPOSITION / COMPOSIZIONE

Mid grain leather
Pelle mezzo fiore

• RUBBING FASTNESS / SOLIDITÀ ALLO SFREGAMENTO Dry (500 Cycles) and Wet (250 Cycles) ≥ 4 (UNI EN ISO 11640:1998)

- LIGHT FASTNESS / SOLIDITÀ ALLA LUCE ≥ 5 (UNI EN ISO 105 B02) (MET.5)
- FLAME RESISTANCE / RESISTENZA AL FUOCO
BS 5852:1979
BS EN 1021-1-2:2006
IMO RES A652 (16)

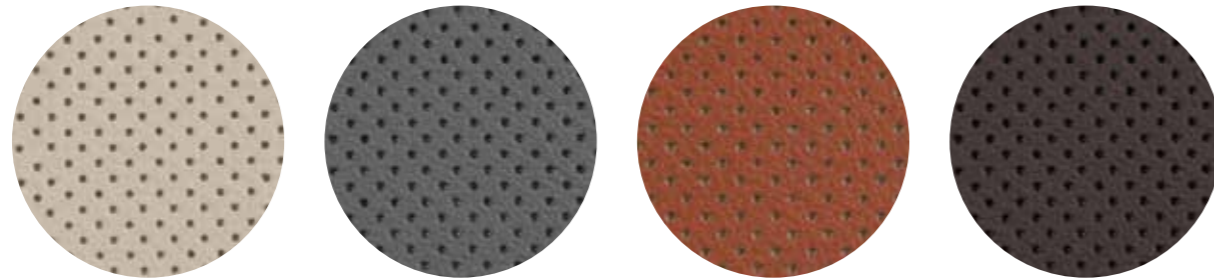
cleaning / lavaggio

Clean with a damp cloth using water. Do not use detergents, solvents, bleached, abrasives. Pulire con un panno umido d'acqua. Non usare detersivi, solventi, candeggianti, abrasivi.

• APPROVED / OMOLOGATO



CATEGORY P / CATEGORIA P



PGCF

PGRF

PTEF

PMAF

technical specifications / specifiche tecniche

• COLLECTION / COLLEZIONE



• COMPOSITION / COMPOSIZIONE
Perforated mid grain leather
Pelle mezzo fiore traforata

• RUBBING FASTNESS / SOLIDITÀ ALLO SFREGAMENTO
Dry (500 Cycles) and Wet (250 Cycles) ≥ 4
(UNI EN ISO 11640:1998)

• LIGHT FASTNESS / SOLIDITÀ ALLA LUCE
 ≥ 5 (UNI EN ISO 105 B02) (MET.5)
• FLAME RESISTANCE / RESISTENZA AL FUOCO
BS 5852:1979
BS EN 1021-1-2:2006
IMO RES A652 (16)

cleaning / lavaggio

Clean with a damp cloth using water. Do not use detergents, solvents, bleached, abrasives.
Pulire con un panno umido d'acqua. Non usare detersivi, solventi, candeggianti, abrasivi.

• APPROVED / OMOLOGATO



only for collection / solo per collezioni

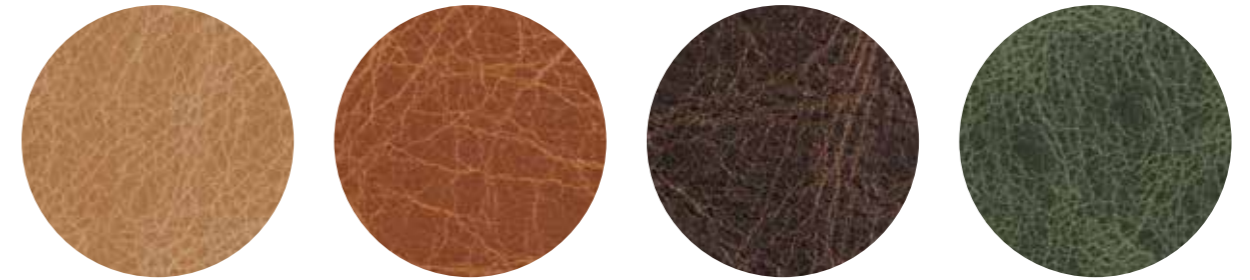


Inner part of the back, upper part of the seat.
Lato interno dello schienale e parte superiore del sedile.

Vic / Vic Metal



CATEGORY P / CATEGORIA P



PBS

PCO

PMS

PVE

technical specifications / specifiche tecniche

• COLLECTION / COLLEZIONE



• COMPOSITION / COMPOSIZIONE
Vintage mid grain leather
Pelle mezzo fiore anticata

• RUBBING FASTNESS / SOLIDITÀ ALLO SFREGAMENTO
Dry (50 Cycles) and Wet (20 Cycles) ≥ 3
(EN ISO 11640:1998)
• LIGHT FASTNESS / SOLIDITÀ ALLA LUCE
 $\geq 2/3$ (EN ISO 105-B02) (MET.5)
• FLAME RESISTANCE / RESISTENZA AL FUOCO
BS 5852:1979
BS EN 1021-1-2:2006

cleaning / lavaggio

Clean with warm and damp cloth. Do not use detergents, solvents, bleached, abrasives.
Pulire con acqua calda e un panno umido. Non usare detersivi, solventi, candeggianti, abrasivi.

only for collections / solo per collezioni



Malmö

Inga

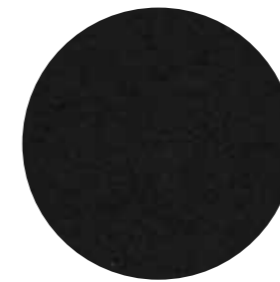
Hard leather

Cuoio

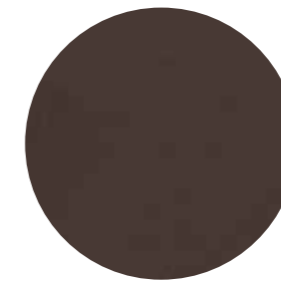
CATEGORY F / CATEGORIA F



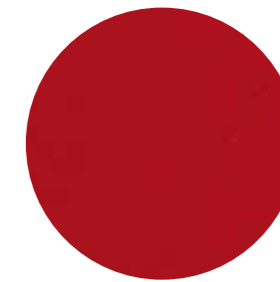
F 07



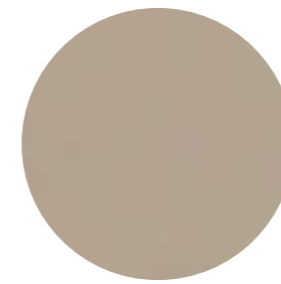
F 05



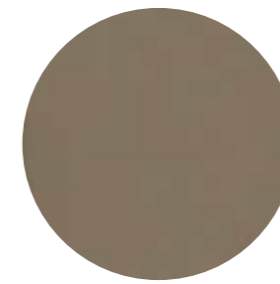
F 01



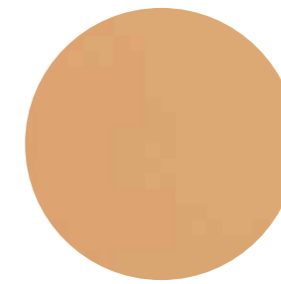
F 06



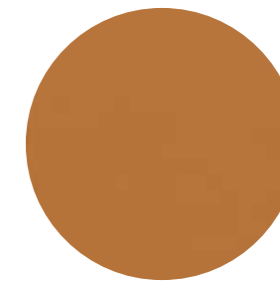
F 09



F 08



F 03



F 04

technical specifications / specifiche tecniche

- **COMPOSITION / COMPOSIZIONE**
Genuine leather, tanned with vegetable substances.
Cuoio naturale, conciato con sostanze vegetali.

- **RUBBING FASTNESS / SOLIDITÀ ALLO SFREGAMENTO**
Satisfactory up to maximum 700 abrasions in humid environment and 1000 abrasions in dry environment.
Soddisfacente sino a max 700 abrasioni all'umido e 1000 abrasioni al secco.

cleaning / lavaggio

Clean with a damp cloth using water.
Pulire con un panno umido d'acqua.



only for collections / solo per collezioni



Fox



Gliss



Inga



Kuadra



Kuadra XL



Malmö



Mood



Woody

CATEGORY F / CATEGORIA F



F 18



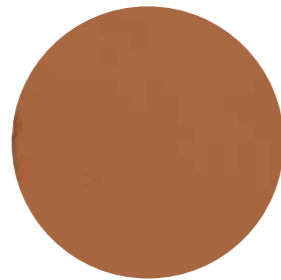
F 11



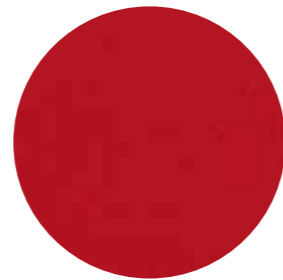
F 12



F 19



F 13



F 17

technical specifications / specifiche tecniche

- **COMPOSITION / COMPOSIZIONE**
Regenerated hide leather.
Tanned leather cuttings and shavings linked with natural rubber lattelx.
Cuoio rigenerato. Ritagli e rasatura di cuoio conciato legati con lattice di gomma naturale.

- **ABRASION / ABRASIONE**
Dry and wet >1000 (UNI EN ISO 7724)
- **LIGHT FASTNESS / SOLIDITÀ ALLA LUCE**
4-5 Xenotest Method
- **FLAME RESISTANCE / RESISTENZA AL FUOCO**
BS EN 1021 1&2
BS 5852 Part 1
US CA TB 117 E Part 1

cleaning / lavaggio

Clean with a damp cloth using water.
Pulire con un panno umido d'acqua.

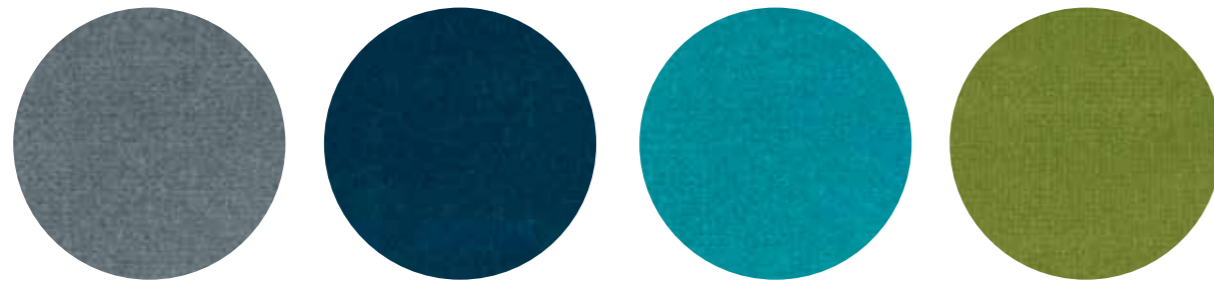
only for collections / solo per collezioni



Inga Kuadra Kuadra XL



CATEGORY E / CATEGORIA E



E 04

E 03

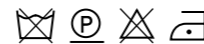
E 05

E 02



E 01

technical specifications / specifiche tecniche

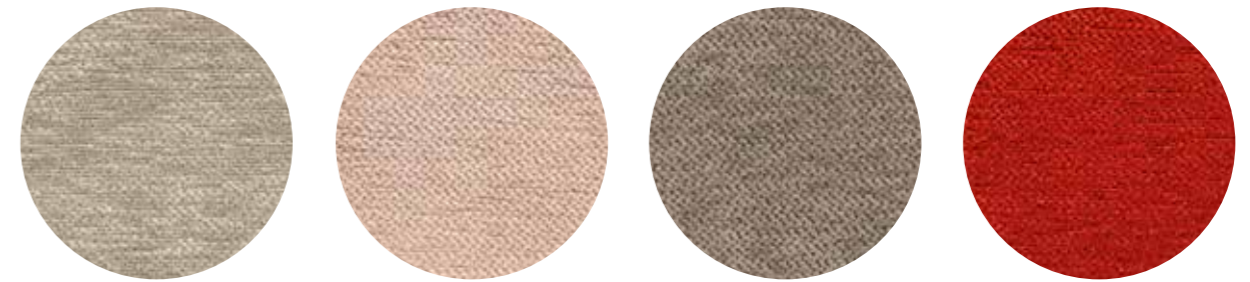


- COLLECTION / COLLEZIONE
DEDAR
ADAMO & EVA
- COMPOSITION / COMPOSIZIONE
100% Cotton

- ABRASION / ABRASIONE
50.000 cycles, Martindale (ISO 12947-2)
- RUBBING FASTNESS / SOLIDITÀ ALLO SFREGAMENTO
Dry 4-5 and Wet 3-5, scale 1-5
(ISO 105-X12)

- LIGHT FASTNESS / SOLIDITÀ ALLA LUCE
4-6, scale 1-8 (ISO 105-B02)

CATEGORY G / CATEGORIA G

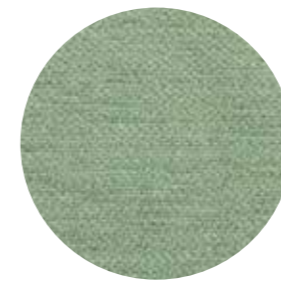


G 180

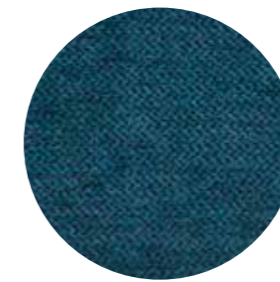
G 182

G 181

G 185



G 183



G 184

technical specifications / specifiche tecniche



- COLLECTION / COLLEZIONE
kvadrat - STILL
DESIGNER Georgina Wright
- COMPOSITION / COMPOSIZIONE
100% TREVIRA CS®
- ABRASION / ABRASIONE
50.000 cycles, Martindale
(EN ISO 12947)
- RUBBING FASTNESS / SOLIDITÀ ALLO SFREGAMENTO
Dry and Wet 4-5, scale 1-5
(EN ISO 105-X12)

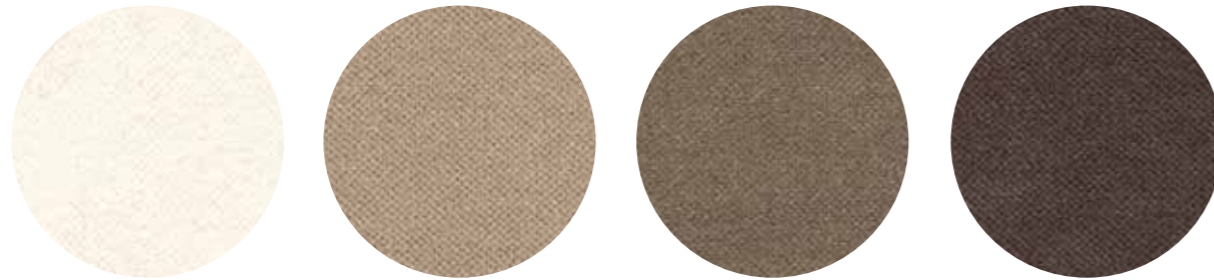
- PILLING
4-5, scale 1-5 (EN ISO 12945)
- LIGHT FASTNESS / SOLIDITÀ ALLA LUCE
5-7, scale 1-8 (ISO 105-B02:2014)
- SOUND ABSORPTION / ASSORBIMENTO ACUSTICO
folded: $\alpha_w = 0.85$ Class B (ISO 11654)
- FLAME RESISTANCE / RESISTENZA AL FUOCO
BS 5852 Crib 5
BS 5852 Part 1
BS 5867 Part 2 type B
DIN 4102 B1

- EN 1021-1/2
IMO FTP Code 2010:Part 8
NF D60-013
NF P92 57 M1
ÖNORM B1/Q1
SN 198 898 5.2
UNI 9175 Classe 1 IM
US CA TB 117-2013

- APPROVED / OMOLOGATO



CATEGORY H / CATEGORIA H

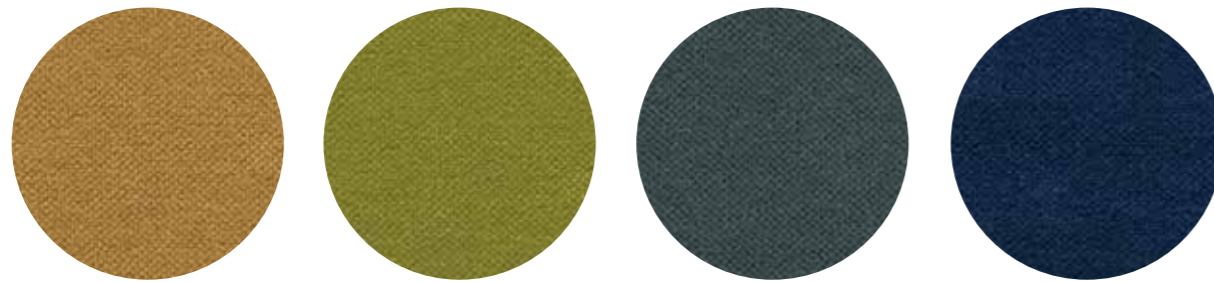


H 40

H 44

H 45

H 46

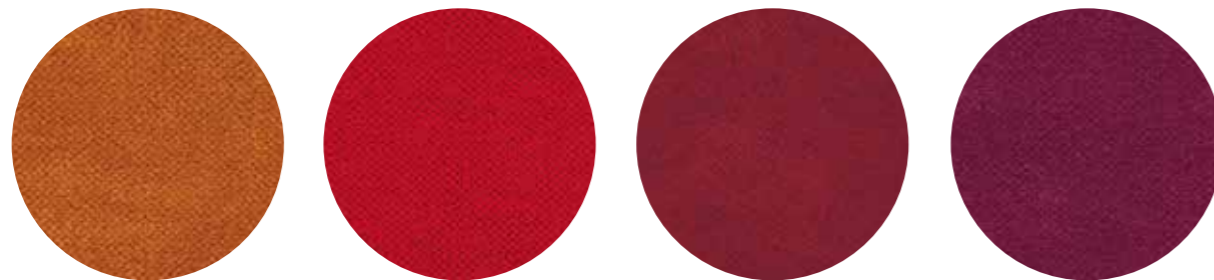


H 43

H 49

H 51

H 50



H 48

H 53

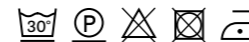
H 42

H 47



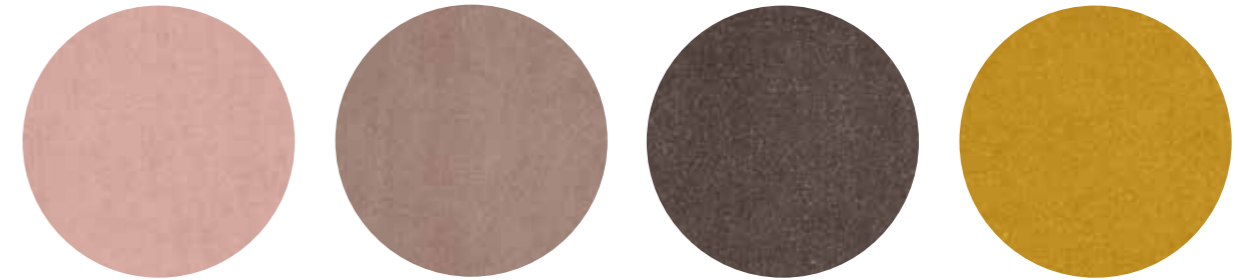
H 41

technical specifications / specifiche tecniche



- COMPOSITION / COMPOSIZIONE
100% TREVIRA CS®
- ABRASION / ABRASIONE
190.000 cycles, Martindale
(EN ISO 12947-2)
- RUBBING FASTNESS / SOLIDITÀ ALLO SFREGAMENTO
Dry and Wet 4-5, scale 1-5
(EN ISO 105-X12)
- PILLING
5, scale 1-5 (EN ISO 12945-2)
- LIGHT FASTNESS / SOLIDITÀ ALLA LUCE
5, scale 1-8 (EN ISO 105-B02)
- SOUND ABSORPTION / ASSORBIMENTO ACUSTICO
folded: $\alpha_w = 0.70$ (EN ISO 354:2003)
- FLAME RESISTANCE / RESISTENZA AL FUOCO
BS 5852 Part 0,1
DIN 4102 B1
EN 1021-1&2
IMO MSC 307(88) Annex 1 Part 7-8
NF P 92-503-507 M1
NFPA 260:2019
UNI 9177 Classe 1
UNI 9175 Classe 1 IM
US CA TB 117-2013

CATEGORY N / CATEGORIA N

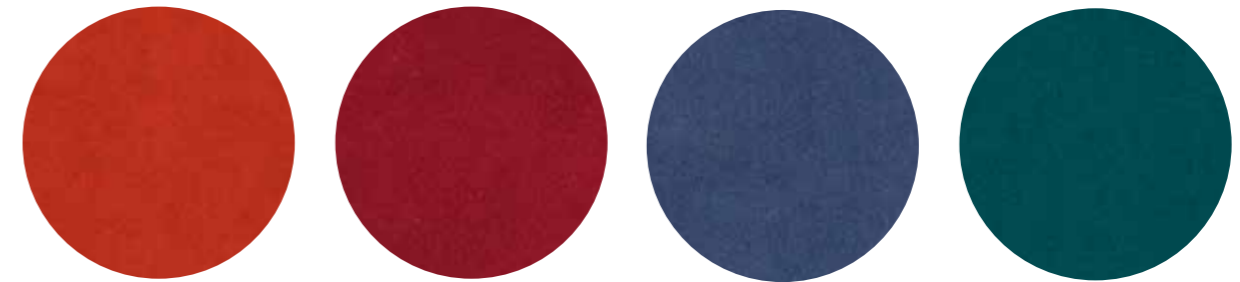


N 20

N 21

N 22

N 23



N 24

N 25

N 26

N 27

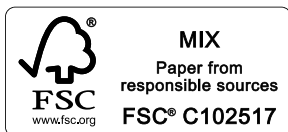
technical specifications / specifiche tecniche



- COLLECTION / COLLEZIONE
kvadrat-SAHCO
BALBOA
DESIGNER Najberg
- COMPOSITION / COMPOSIZIONE
100% Polyester FR
- ABRASION / ABRASIONE
100.000 cycles, Martindale
(EN ISO 12947)
- PILLING
4, scale 1-5
(EN ISO 12945-2)
- LIGHT FASTNESS / SOLIDITÀ ALLA LUCE
4-6, scale 1-8
(EN ISO 105-B02)
- SOUND ABSORPTION / ASSORBIMENTO ACUSTICO
folded: $\alpha_w = 0.80$ Class B
(ISO 11654)
- FLAME RESISTANCE / RESISTENZA AL FUOCO
BS 5852 Crib 5
BS 5867 Part 2 Type B
EN 1021-1/2
EN 13501, B-s1, d0
IMO FTP Code 2010: Part 8
ÖNORM B1/Q1
SN 198 898 5.2
UNI 9175 Classe 1 IM
US CA TB 117-2013

APPROVED / OMOLOGATO





Pesi, dimensioni e colori sono indicativi. Pedrali si riserva la facoltà di apportare modifiche o migliorie senza alcun preavviso.
Weights, measurements and colours are indicative. Pedrali reserves the right to modify or upgrade the products without prior notice.

Industrial property right | Diritto di proprietà industriale

I contenuti del presente catalogo, quali, a titolo esemplificativo, le opere, le immagini, le fotografie, i documenti, i disegni, le figure, i loghi ed ogni altro materiale, in qualsiasi formato, pubblicato sono protetti a livello mondiale dal diritto d'autore e da ogni altro diritto di proprietà intellettuale di PEDRALI.

The contents of the present catalogue such as, by way of example, the works, the images, the pictures, the documents, the drawings, the forms, the logos and all other materials, published in any format, are worldwide protected by copyrights and any other industrial intellectual property right of Pedrali.